



237 North 13th Street • P.O. Box 430 • Blair, Nebraska 68008 • 402-426-4181 • Fax 402-426-4180

MEMBER OF



CON-E-CO®

An Oshkosh Truck Corporation Company

www.con-e-co.com

PRINTED IN U.S.A.

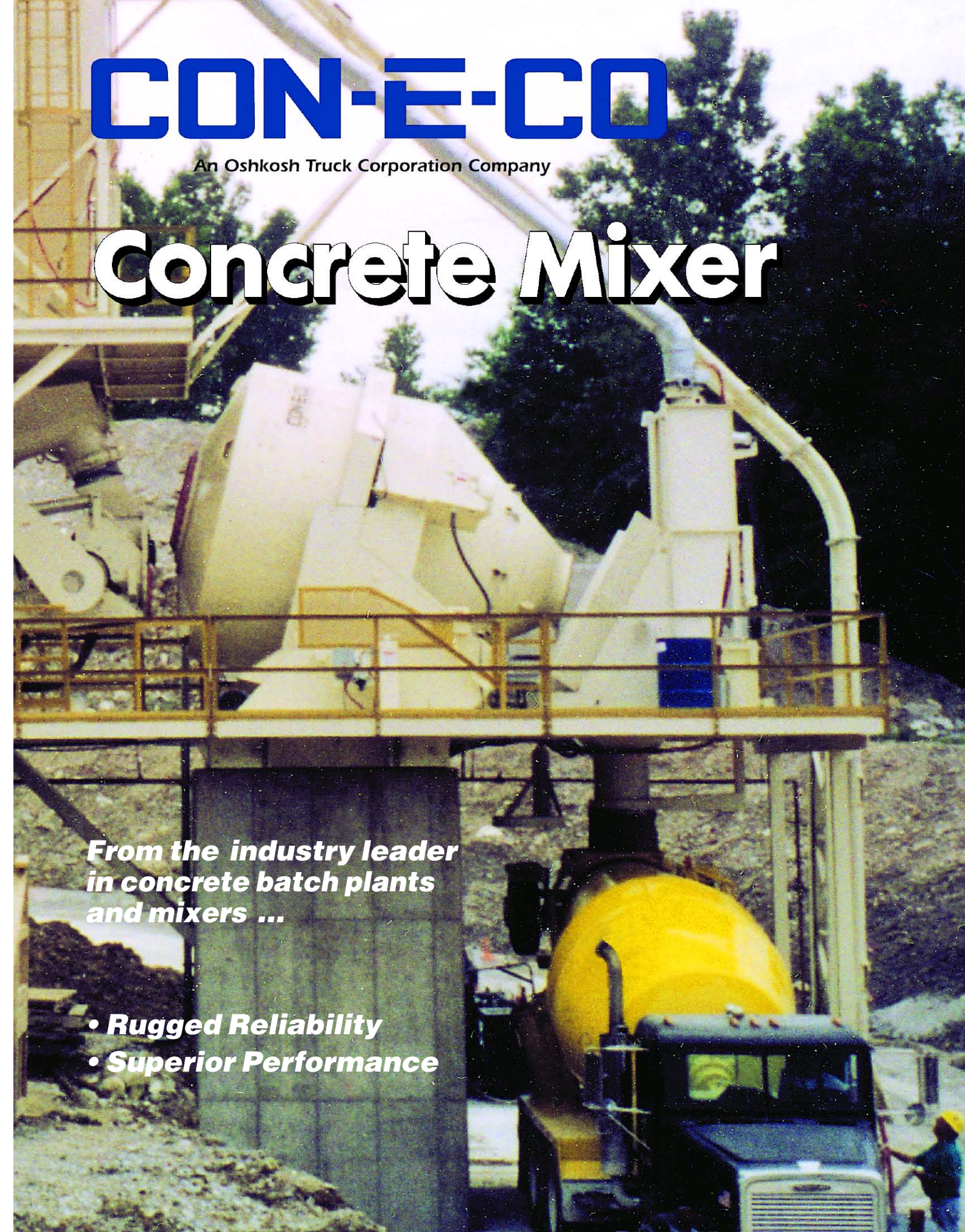
CON-E-CO

An Oshkosh Truck Corporation Company

Concrete Mixer

*From the industry leader
in concrete batch plants
and mixers ...*

- **Rugged Reliability**
- **Superior Performance**





Oversized Capacity

- Calculated capacities of 12 or 15 cubic yards
- Increased quality of concrete mix
- Shortened mix time
- Allows for 54" wide conveyor belt charging while maintaining ratings of 12- or 15-cubic-yard capacities

Shipped Assembled and Pre-Wired

- Factory pre-assembly reduces field assembly cost
- Pre-wired means no costly field wiring

65,000 Pounds — Delivered

- Heavy-duty mixer drum for added strength and long life
- Heavy-duty stationary and tilt frame designed for long life

Machine Cut Ring and Pinion Gears

- Smooth and quiet operation
- Longer life through hardened stress relieved ring and pinion gears

Machine Turned — 1" Thick x 14" Wide Ring Gear Belly Band

- Superior roundness of drum insures smooth operation and extends life
- Heavy-duty band greatly increases strength at critical load area of mixer drum
- Superior strength allows drives to be mounted at top of mixer, away from the splash of concrete during mixer discharge

Automatic Ring Gear Oiler

- Increases life of ring and pinion gear
- Automatic system reduces maintenance time



Planetary Drive System

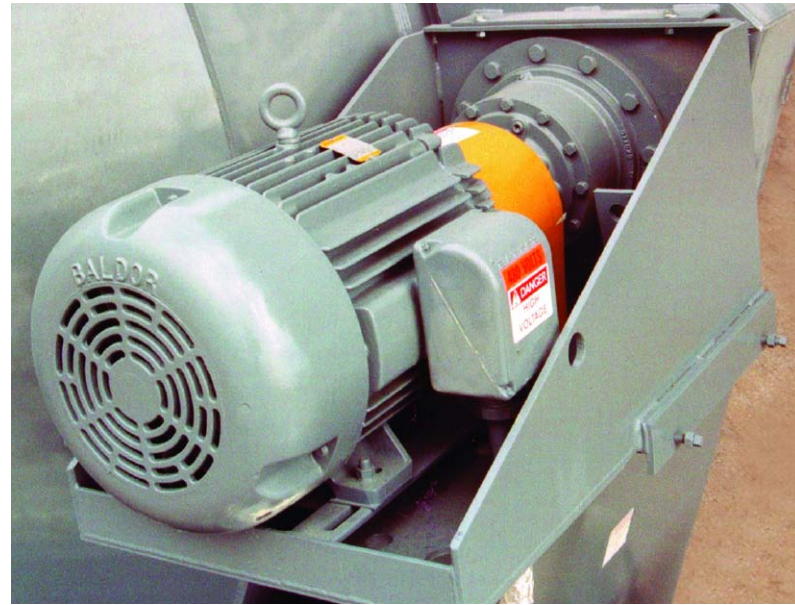
- Two (2) 75 or two (2) 100 horsepower motors
- All motors fan cooled and totally enclosed for lasting, durable operation
- Heavy-duty planetary gear drives transfer more horsepower to mixer over conventional drives

Five Star Mixing Blade System

- Simple design for easy replacement
- Aggressive mixing action for quality concrete mixing
- Shortened mixing time

No Mixing Blades in Cone

- Even, controlled discharge for faster truck mixer charging
- Does not retard discharge of low-slump concrete



1" Urethane Liners on Drum and Mixer Blades

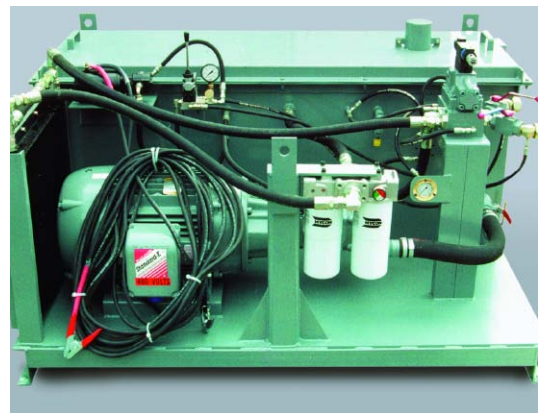
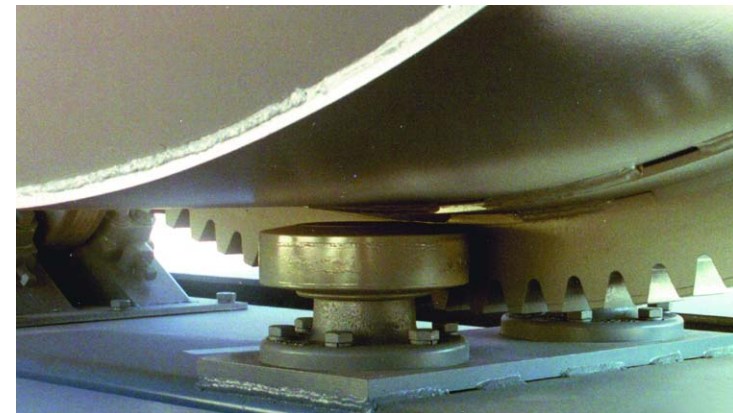
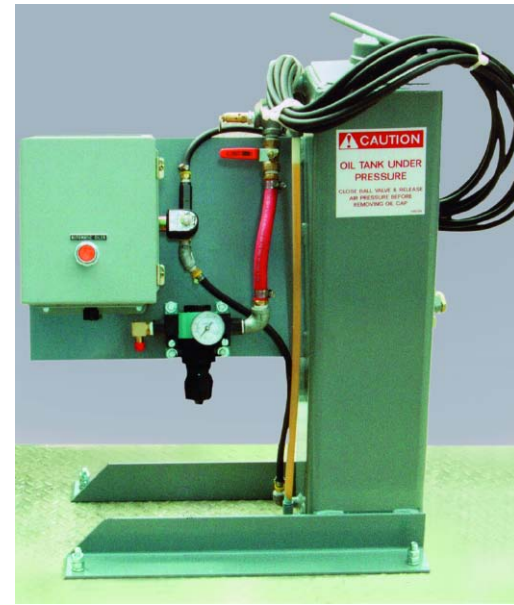
- Longer drum and mixer blade life
- Quick and easy cleanout

4-7/16" Diameter Bronze Bushed Tilt Pins

- Oversized for long life and smooth, reliable operation
- Shortened mixing time

Large Hydraulic Reservoir with Tank Heater

- Large capacity oil reservoir and built-in cooler
- Tank heater preheats oil during plant startup to insure consistent hydraulic operations
- Heavy-duty components for long life
- Hydraulic power pack design for easy serviceability



Hydraulic Pump

- Variable displacement load sensing pump and proportional directional control valve provides smooth, cost-efficient operation

Electronic Return Cushion

- Smooth start and stop reduces fatigue and extends component life

12-Volt Emergency Tilt

- Enables mixer to be tilted and emptied during power outages

U.L. Listed Electrical Panels

- Factory installed and labeled U.L. Listed control panel
- Available 60 cycle/460 volt or 50 cycle/380 volt

Serviceability

- Easily accessible components for easy maintenance
- Grease zerks plumbed to isolated area away from moving parts
- Built-in stop blocks to hold mixer in tilted position for easy access
- Permanently located thrust rollers for long, maintenance-free operation
- Totally enclosed fan-cooled motors for protection against the elements

Optional Transportation System

- Triple axle for reliable towing

Optional Self-Erect System

- Hydraulic self-erecting system eliminates cranes on mobile job sites